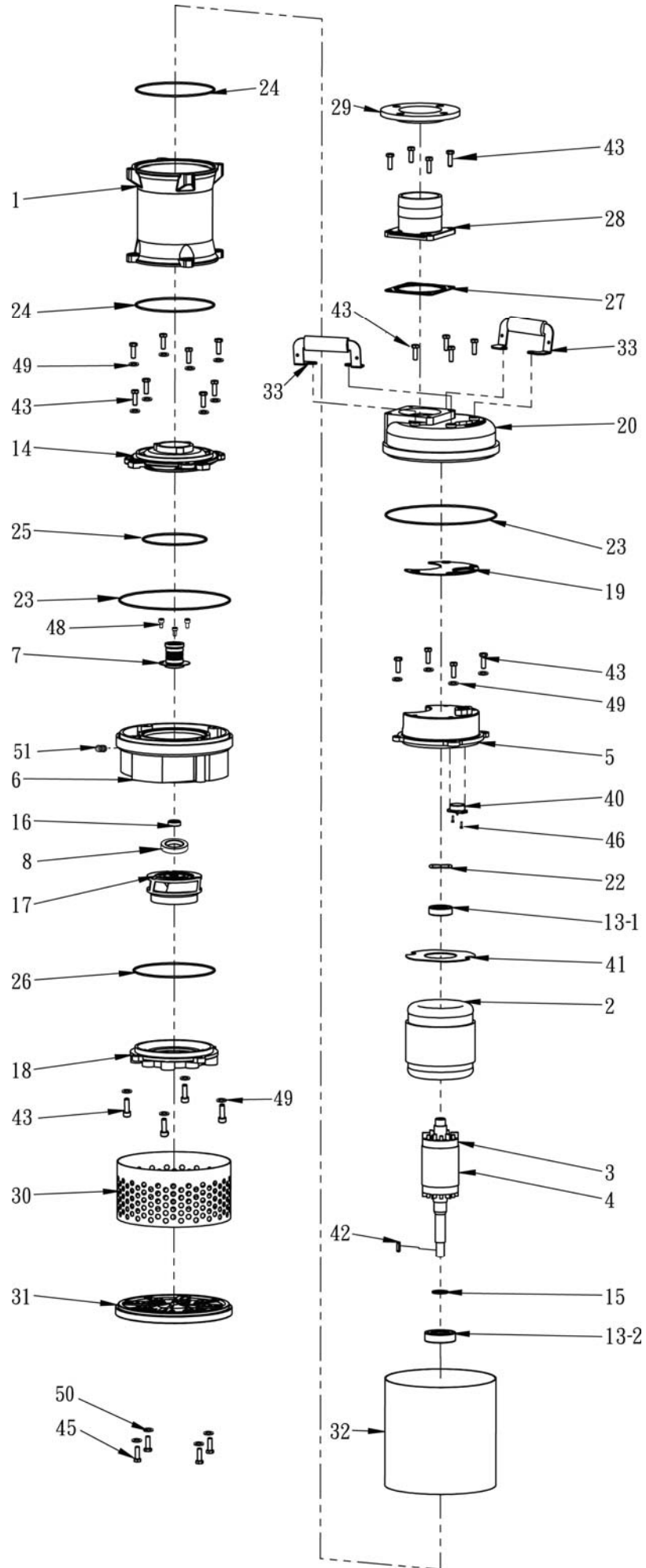


Construction



EDW-2~5HP (3PH)

No	Part	Material	No	Part	Material
1	Motor frame	EN-GJL-200	25	O-ring	NBR
2	Stator	-	26	O-ring	NBR
3	Rotor	-	27	Packing	NBR
4	Shaft	AISI 304	28	Discharge	EN-GJL-200
5	Motor Cover	EN-GJL-200	29	Flange	EN-GJL-200
6	Pump casing	EN-GJL-200	30	Strainer	AISI 304
7	Mechanical Seal	CA/CE&SIC/SIC	31	Base Plate	EN-GJL-200
8	Lip Seal	NBR	32	Outer case	AISI 304
13-1	Upper Bearing	NTN/TPI	33	Handle	SC+PVC
13-2	Lower Bearing	NTN/TPI	40	Thermal Protector	KLIXON
14	Lower Bearing Bracket	EN-GJL-200	41	Insulating sheet	-
15	Bearing fixer	SPCC	42	Impeller key	AISI 304
16	Shaft Sleeve	AISI 304	43	Hex bolt	AISI 304
17	Impeller	Ni Chrome Steel	45	Hex bolt	AISI 304
18	Suction Plate	EN-GJL-200	46	Screw	Steel
19	Packing	NBR	48	Screw	Steel
20	Upper cover	EN-GJL-200	49	Spring Washer	AISI 304
22	Wave washer	SC	50	Spring Washer	AISI 304
23	O-ring	NBR	51	Set Screw	AISI 304
24	O-ring	NBR			

TPI is a family brand of NTN group.